



**Hikvision Driver Installation and Operation Guide**

**for Paxton Access control**

## Revision

<b>Revision History</b>	<b>Description</b>	<b>Reviser</b>	<b>Date</b>
Version 1.0	Initial version	Cynthia Shao	2016-02

## Content

1. Overview .....	4
2. Installation.....	4
2.1 Installing Hikvision driver .....	4
3. Operation .....	7
3.1 Adding a camera.....	7
3.2 Linking a Camera to a Door .....	9
3.3 Viewing Video.....	9

## 1. Overview

This paper intends to help customers to install Hikvision drivers into Paxton Access Control Software and introduce the operation steps, then video from Hikvision devices can be successfully displayed in Paxton event window.

### ❖ Requirements

Hikvision driver- HikvisionMiniDriverSetup.msi  
Paxton Net2 Pro or Lite-5.03.2818.3674 or above

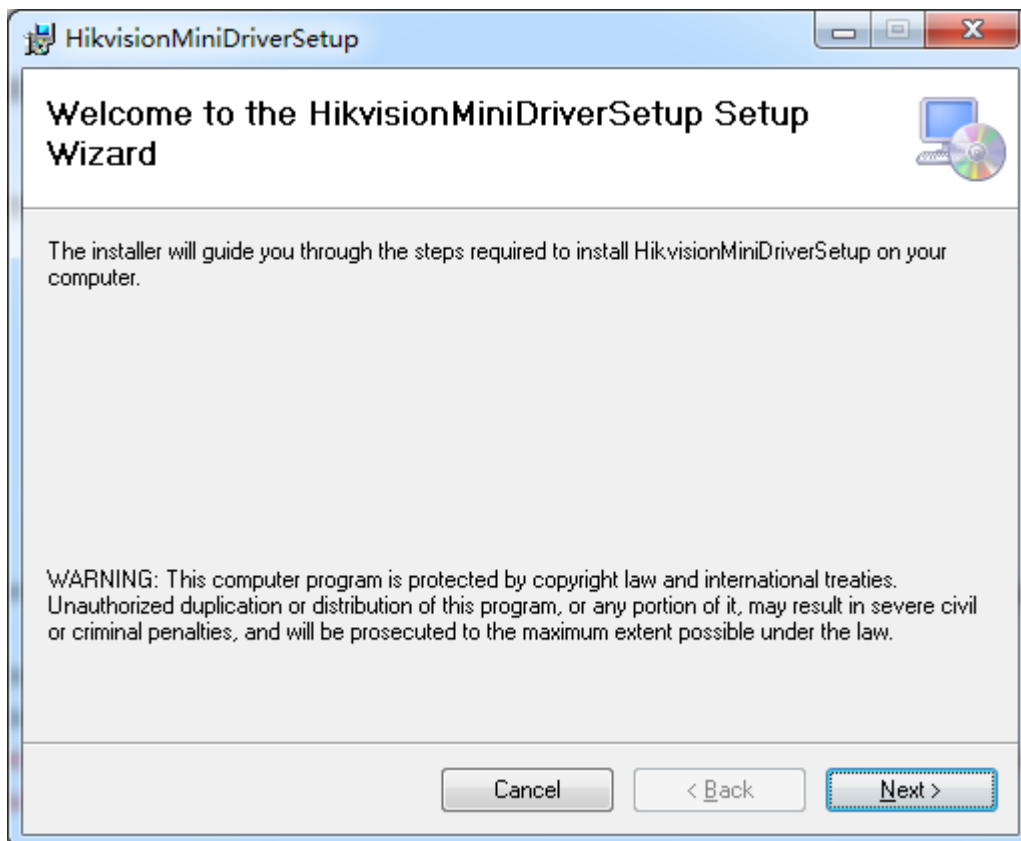
### ❖ Hikvision Contact information

Email: [support@hikvision.com](mailto:support@hikvision.com)  
Tel: +86-571-8807-5998  
Website: [www.hikvision.com](http://www.hikvision.com)

## 2. Installation

### 2.1 Installing Hikvision driver

1) Double click 'HikvisionMiniDriverSetup.msi' to install Hikvision driver, then click 'Next'.



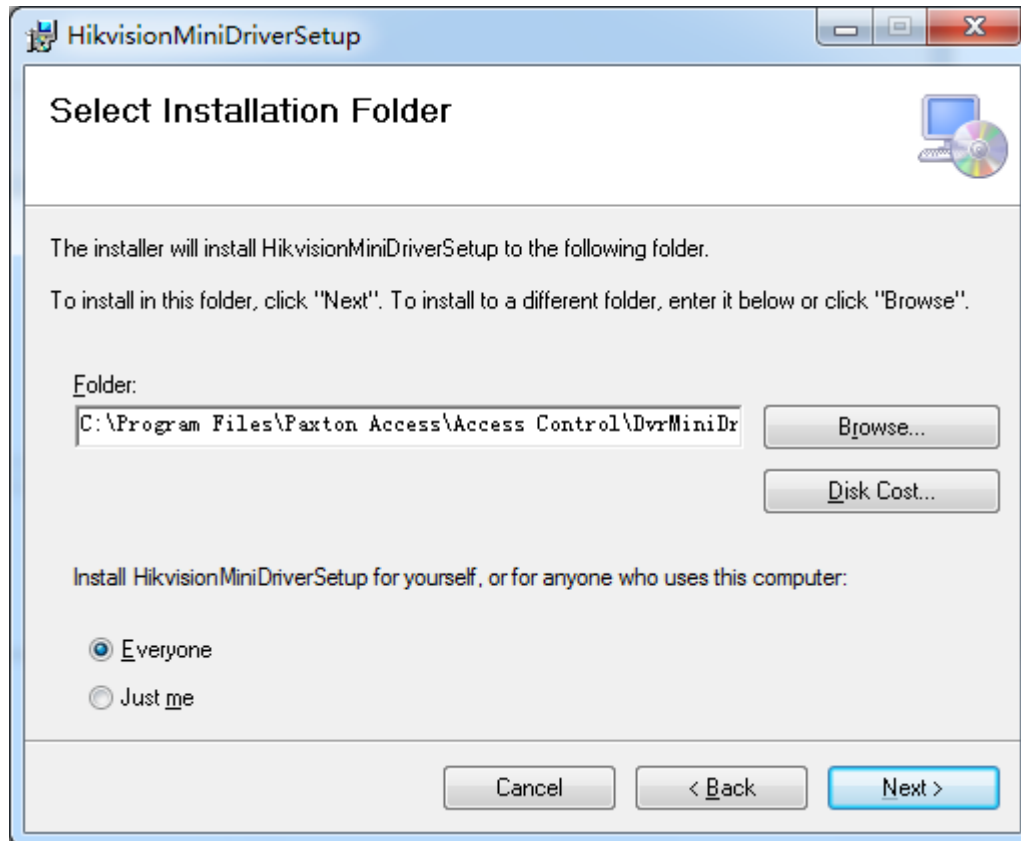
2) Make sure that Hikvision driver are installed in the same folder as Net2, for example, the

following paths.

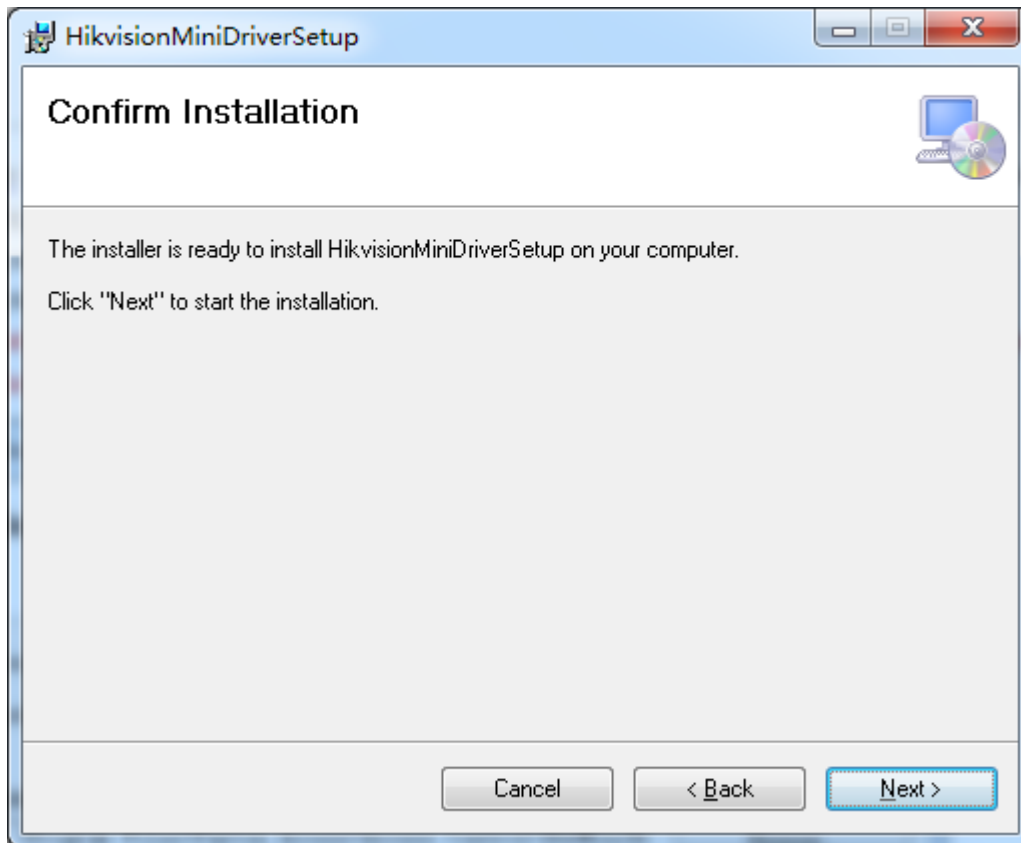
C:\Program Files\Paxton Access\Access Control\Net2.exe

C:\Program Files\Paxton Access\Access Control\DvrMiniDrivers

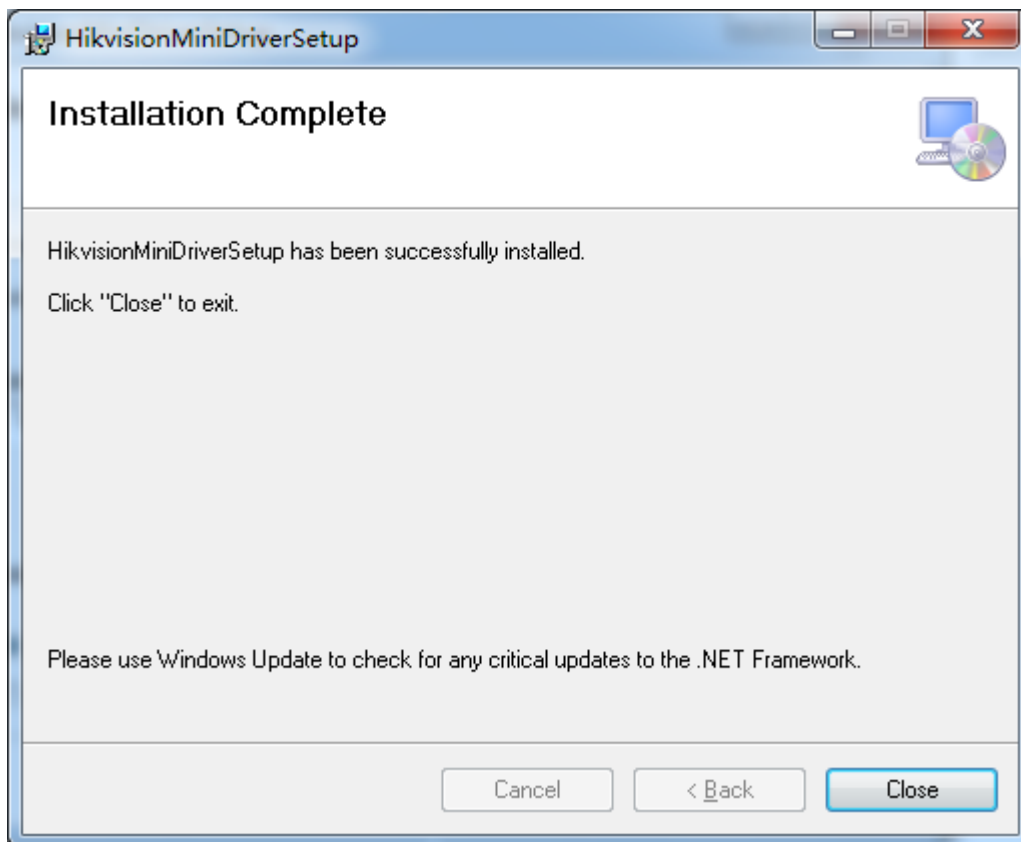
*Note: Net2 and Hikvision driver must be in the same folder, otherwise, Hikvision driver can't be found during operation.*



3) Click 'Next' to confirm installation.



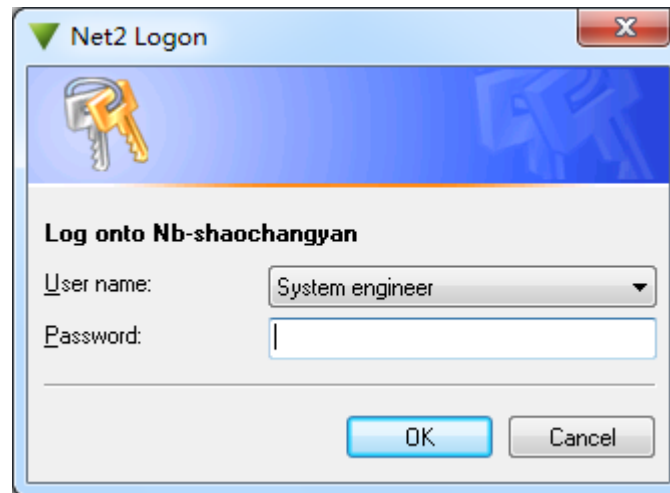
4) After installation complete, click 'close' to exit.



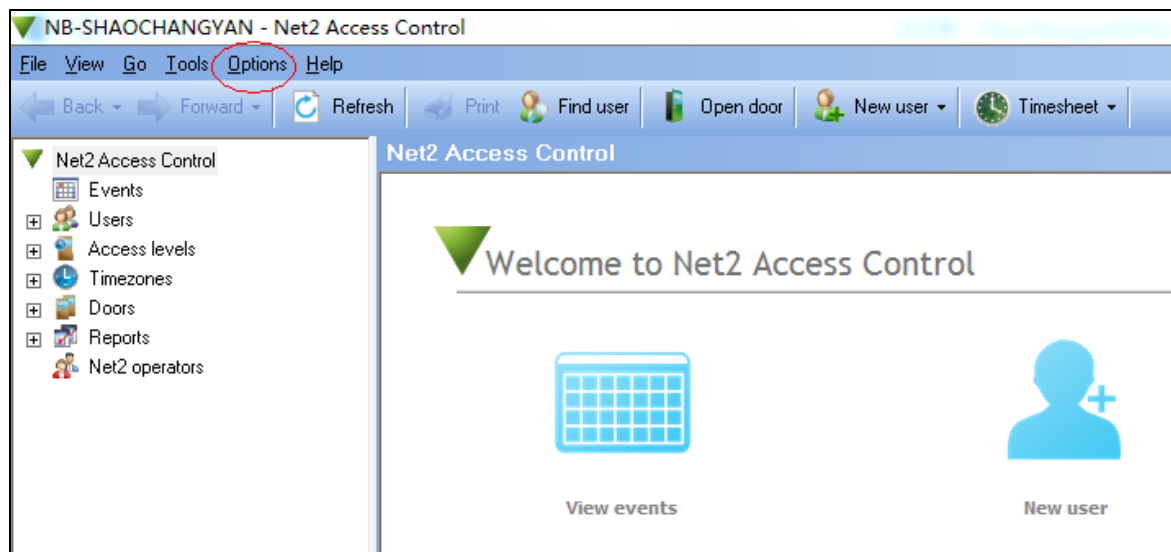
## 3. Operation

### 3.1 Adding a camera

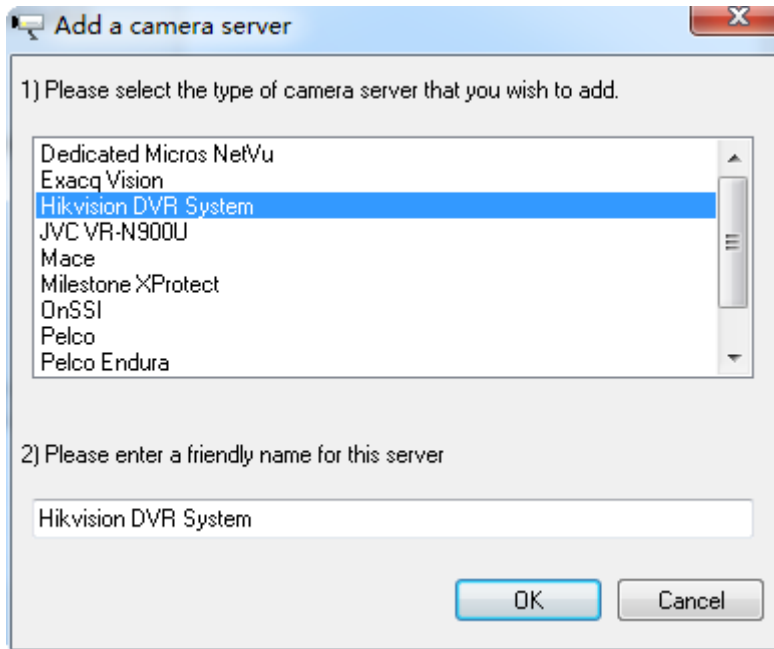
1) Login to Net2 Access Control.



2) Select 'Options', and then 'Camera integration'.



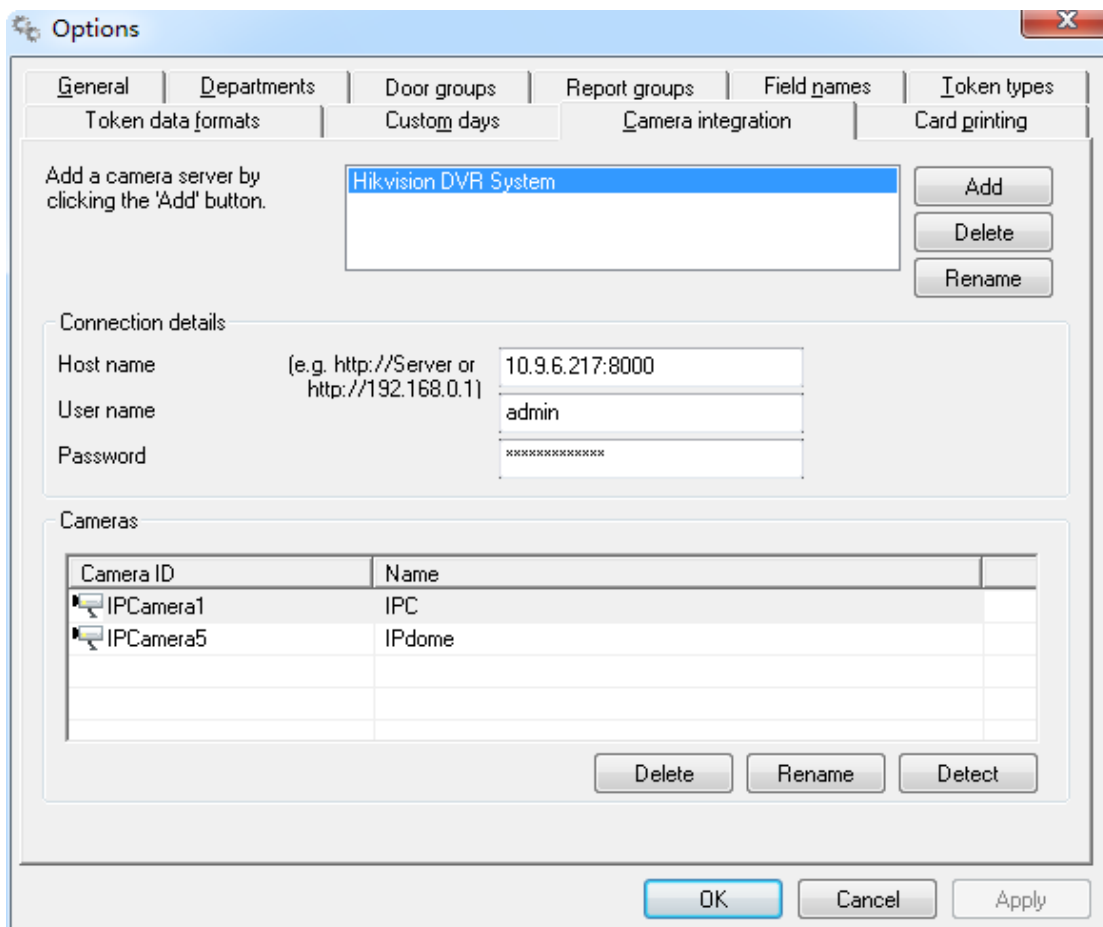
3) Click 'Add' and select 'Hikvision DVR System'.



4) Input hostname, username and password, then click 'Detect', and 'Apply 'OK'.

*Note: Hostname should be IP address: server port, if server port is missed, devices can't be detected.*

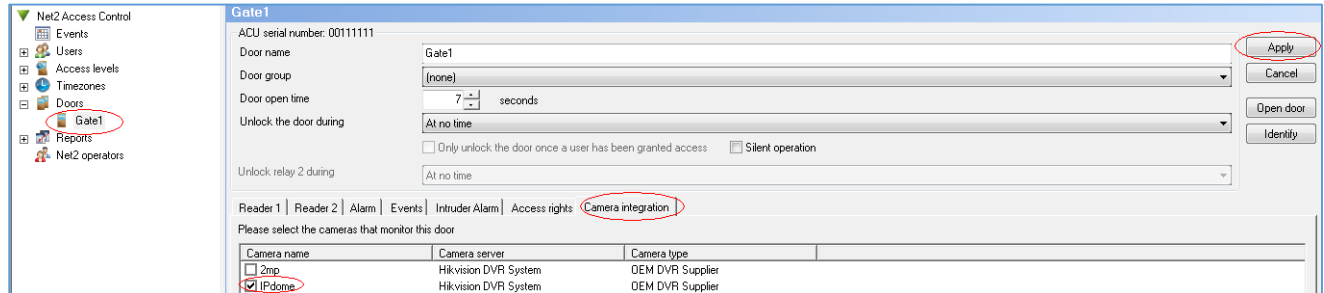
*Tip: you can rename the cameras by clicking on the camera you want to rename and clicking 'Rename'. Type in the new name and click 'OK'. (This will change the name within Paxton Net2 only, not within Hikvision).*





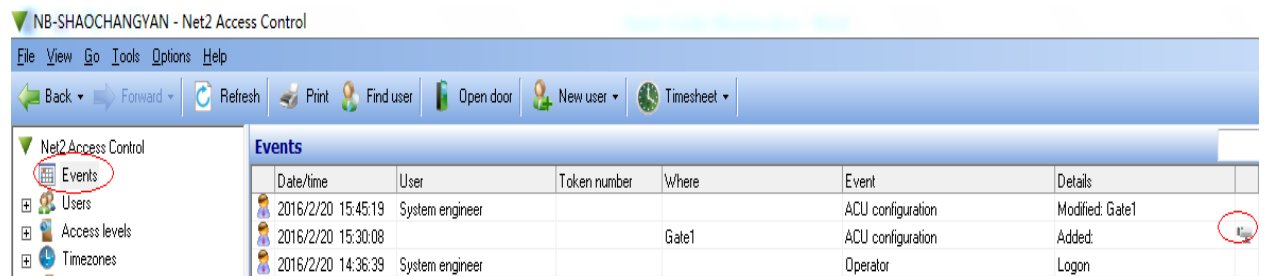
## 3.2 Linking a Camera to a Door


Select a door from your list of control units, click 'Camera integration', and select cameras that monitor the door, then click 'Apply'. (Only 1 camera per door at present).



## 3.3 Viewing Video

1) Click Events, you can see operation details and a camera icon.



2) Double click the camera icon , and you will see playback.

3) It will playback fast forward by clicking , while clicking  to Rewind playback.

